

NOTES TO USERS

This map is for use in the National Flood Insurance Program. It does not necessarily identify all areas subject to flooding, particularly from local drainage sources or small flows. The community map repository should be used to identify areas subject to flooding from local drainage sources.

To obtain more detailed information in areas where Base Flood Elevations (BFEs) and/or Floodway Limits have been determined, users are encouraged to consult the National Flood Insurance Program Flood Insurance Study (FIS) report that accompanies this FIRIM. Users should be aware that BFEs shown on the FIRIM represent the predicted water surface elevation from a 1% annual chance flood. The BFEs are not intended to be used as the sole source of flood risk information. Users should consult the FIS report for information on flood hazard indicators for the community and for information on flood hazard indicators for the community.

The projection used in the preparation of this map was Georgia State Plane West datum. The datum used in the preparation of this map was Georgia State Plane West datum. The datum used in the preparation of this map was Georgia State Plane West datum. The datum used in the preparation of this map was Georgia State Plane West datum. The datum used in the preparation of this map was Georgia State Plane West datum.

Flood elevations on this map are referenced to the North American Vertical Datum of 1988. Flood elevations are referenced to the same vertical datum. For information regarding the datum used in the preparation of this map, please refer to the FIS report. The datum used in the preparation of this map was Georgia State Plane West datum. The datum used in the preparation of this map was Georgia State Plane West datum.

The projection used in the preparation of this map was Georgia State Plane West datum. The datum used in the preparation of this map was Georgia State Plane West datum. The datum used in the preparation of this map was Georgia State Plane West datum. The datum used in the preparation of this map was Georgia State Plane West datum.

For information on available products associated with this FIRIM, visit the Map Repository website at <http://www.fema.gov/business/fir>. If you have questions about this map, how to order products, or the National Flood Insurance Program in general, please call the FEMA Map Information Hotline at (877) 352-2627 or visit the FEMA website at <http://www.fema.gov/business/fir>.

To obtain current elevation, description, and/or location information for bench marks shown on this map, please contact the National Geospatial Intelligence Agency at (301) 713-3342, or visit the website at <http://www.ngs.gov>.

Base map information shown on this FIRIM was derived from National County aerial photography produced as a result of 1:50,000 scale photography dated 2006. Users should be aware that the information shown on this map may have occurred after the map was published. Map users should contact appropriate agencies for the most current information.

Please refer to the separately printed Map Index for an overview map of the county showing the location of map products, community map repository addresses, and contact information. The Map Index is available on the FEMA website at <http://www.fema.gov/business/fir>.

For information on available products associated with this FIRIM, visit the Map Repository website at <http://www.fema.gov/business/fir>. If you have questions about this map, how to order products, or the National Flood Insurance Program in general, please call the FEMA Map Information Hotline at (877) 352-2627 or visit the FEMA website at <http://www.fema.gov/business/fir>.

To obtain current elevation, description, and/or location information for bench marks shown on this map, please contact the National Geospatial Intelligence Agency at (301) 713-3342, or visit the website at <http://www.ngs.gov>.

Base map information shown on this FIRIM was derived from National County aerial photography produced as a result of 1:50,000 scale photography dated 2006. Users should be aware that the information shown on this map may have occurred after the map was published. Map users should contact appropriate agencies for the most current information.

Please refer to the separately printed Map Index for an overview map of the county showing the location of map products, community map repository addresses, and contact information. The Map Index is available on the FEMA website at <http://www.fema.gov/business/fir>.

For information on available products associated with this FIRIM, visit the Map Repository website at <http://www.fema.gov/business/fir>. If you have questions about this map, how to order products, or the National Flood Insurance Program in general, please call the FEMA Map Information Hotline at (877) 352-2627 or visit the FEMA website at <http://www.fema.gov/business/fir>.

To obtain current elevation, description, and/or location information for bench marks shown on this map, please contact the National Geospatial Intelligence Agency at (301) 713-3342, or visit the website at <http://www.ngs.gov>.

Base map information shown on this FIRIM was derived from National County aerial photography produced as a result of 1:50,000 scale photography dated 2006. Users should be aware that the information shown on this map may have occurred after the map was published. Map users should contact appropriate agencies for the most current information.

Please refer to the separately printed Map Index for an overview map of the county showing the location of map products, community map repository addresses, and contact information. The Map Index is available on the FEMA website at <http://www.fema.gov/business/fir>.

LEGEND

SPECIAL FLOOD HAZARD AREAS SUBJECT TO INUNDATION BY THE 1% ANNUAL CHANCE FLOOD

The 1% Annual Chance Flood (ACF) is the flood that has a 1% chance of being equaled or exceeded in any given year. The Special Flood Hazard Area (SFHA) is the area that is expected to be inundated by the 1% ACF. The base flood elevation (BFE) is the water surface elevation of the ACF. The BFE is shown on the map as a solid line with the elevation value in feet. The BFE is shown on the map as a solid line with the elevation value in feet. The BFE is shown on the map as a solid line with the elevation value in feet.

ZONE AE
Special Flood Hazard Area (SFHA) subject to inundation by the 1% annual chance flood. Areas with a base flood elevation (BFE) of 10 feet or greater. Areas with a BFE of 10 feet or greater are shaded light blue.

ZONE AR
Special Flood Hazard Area (SFHA) subject to inundation by the 1% annual chance flood. Areas with a base flood elevation (BFE) of 5 feet or greater. Areas with a BFE of 5 feet or greater are shaded medium blue.

ZONE AH
Special Flood Hazard Area (SFHA) subject to inundation by the 1% annual chance flood. Areas with a base flood elevation (BFE) of 3 feet or greater. Areas with a BFE of 3 feet or greater are shaded dark blue.

ZONE A0
Special Flood Hazard Area (SFHA) subject to inundation by the 1% annual chance flood. Areas with a base flood elevation (BFE) of 1 foot or greater. Areas with a BFE of 1 foot or greater are shaded very dark blue.

ZONE V
Special Flood Hazard Area (SFHA) subject to inundation by the 1% annual chance flood. Areas with a base flood elevation (BFE) of 0 feet or greater. Areas with a BFE of 0 feet or greater are shaded black.

ZONE VE
Special Flood Hazard Area (SFHA) subject to inundation by the 1% annual chance flood. Areas with a base flood elevation (BFE) of 0 feet or greater. Areas with a BFE of 0 feet or greater are shaded black.

FLOODWAY AREAS IN ZONE AE

Floodway areas are areas that are adjacent to or near floodway structures. Floodway areas are shaded light blue with a wavy pattern.

OTHER FLOOD AREAS

Areas with a base flood elevation (BFE) of 10 feet or greater. Areas with a BFE of 10 feet or greater are shaded light blue. Areas with a BFE of 5 feet or greater are shaded medium blue. Areas with a BFE of 3 feet or greater are shaded dark blue. Areas with a BFE of 1 foot or greater are shaded very dark blue.

OTHER AREAS

Areas that are not subject to inundation by the 1% annual chance flood. Areas that are not subject to inundation by the 1% annual chance flood are shaded white.

COASTAL BARRIER RESOURCES SYSTEM (CBRS) AREAS

CBRS areas are areas that are adjacent to or near coastal barrier resources. CBRS areas are shaded light blue with a wavy pattern.

OTHERWISE PROTECTED AREAS (OPAs)

OPAs are areas that are otherwise protected from flood hazard. OPAs are shaded light blue with a wavy pattern.

1% Annual Chance Floodway Boundary

The boundary of the 1% annual chance floodway. The boundary is shown as a solid line with a wavy pattern.

Zone D Boundary

The boundary of Zone D. The boundary is shown as a solid line with a wavy pattern.

Zone D Floodway

The floodway area of Zone D. The floodway area is shaded light blue with a wavy pattern.

Zone D Floodway Boundary

The boundary of the Zone D floodway. The boundary is shown as a solid line with a wavy pattern.

Zone D Floodway Structure

The structure of the Zone D floodway. The structure is shown as a solid line with a wavy pattern.

Zone D Floodway Structure

The structure of the Zone D floodway. The structure is shown as a solid line with a wavy pattern.

Other Symbols

Other symbols used on the map include: **EL (987)** for elevation, **1:50,000** for scale, **600,000 FT** for distance, **DMS19 X** for datum, and **M 1.5** for map scale.

Other Symbols

Other symbols used on the map include: **EL (987)** for elevation, **1:50,000** for scale, **600,000 FT** for distance, **DMS19 X** for datum, and **M 1.5** for map scale.

Map Repository

Refer to <http://www.fema.gov/business/fir> for information on the Map Repository.

Effective Dates of Revisions to This Panel

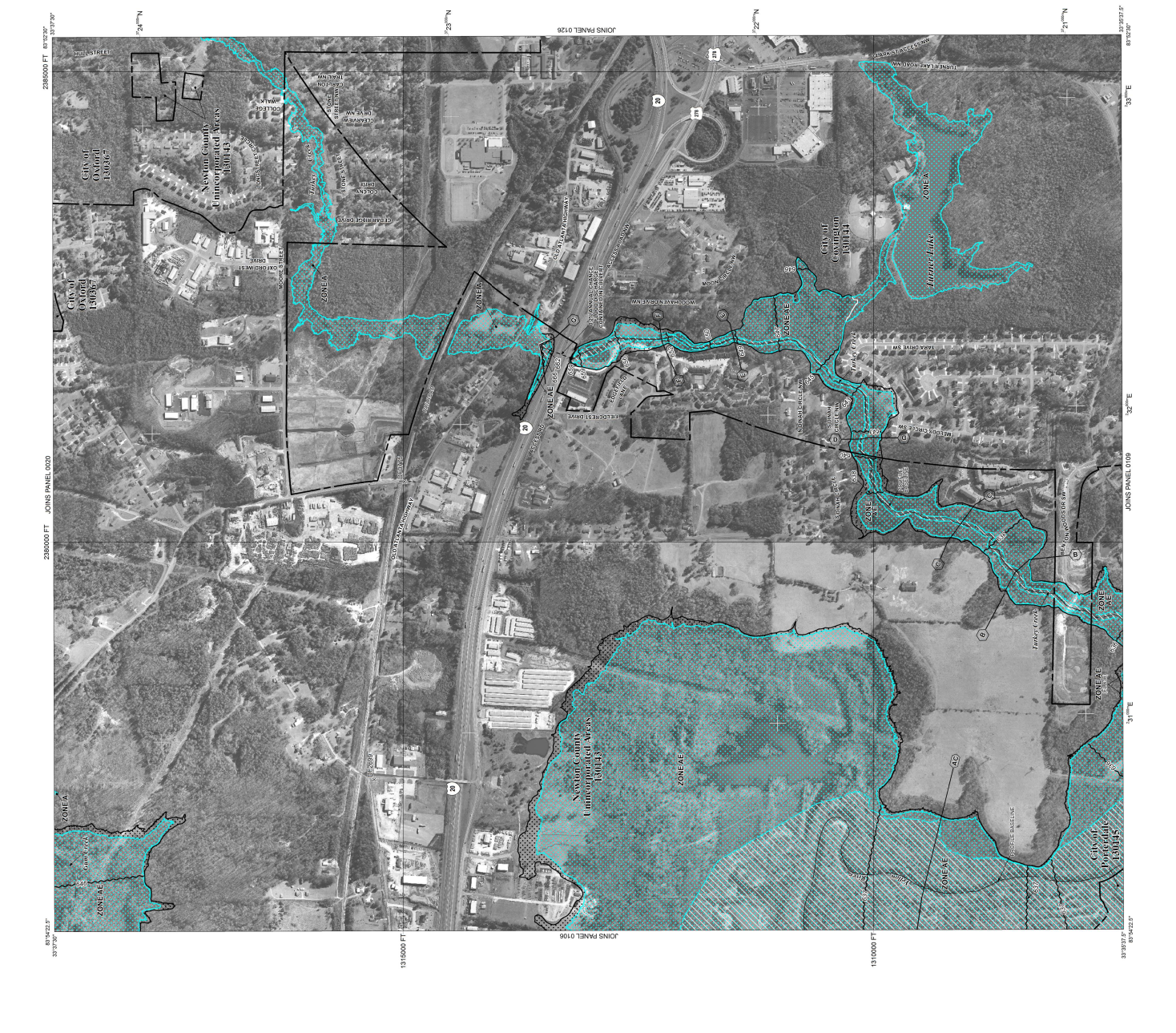
Effective dates of revisions to this panel are listed in the table below.

Revisions

Revisions to this panel are listed in the table below.

Revisions

Revisions to this panel are listed in the table below.



NFIP **PANEL 0107D**

FIRM
FLOOD INSURANCE RATE MAP
NEWTON COUNTY,
GEORGIA
AND INCORPORATED AREAS

PANEL 107 OF 280
(SEE MAP INDEX FOR FIRM PANEL LAYOUT)

COMMUNITY: NEWTON COUNTY
FIRM NUMBER: 13217C0107D
DATE: MARCH 17, 2014

MAP REVISIONS
DATE: MARCH 17, 2014

MAP NUMBER
13217C0107D

MAP REVISED
MARCH 17, 2014

Map Information

Map users should refer to the National Flood Insurance Program website at <http://www.fema.gov/business/fir> for information on the program and for information on how to order products.

Map users should refer to the National Flood Insurance Program website at <http://www.fema.gov/business/fir> for information on the program and for information on how to order products.

Map users should refer to the National Flood Insurance Program website at <http://www.fema.gov/business/fir> for information on the program and for information on how to order products.

